

City of Joburg Broadband Network Project

RFI Briefing Session 8th March 2007 10am – 11:30am



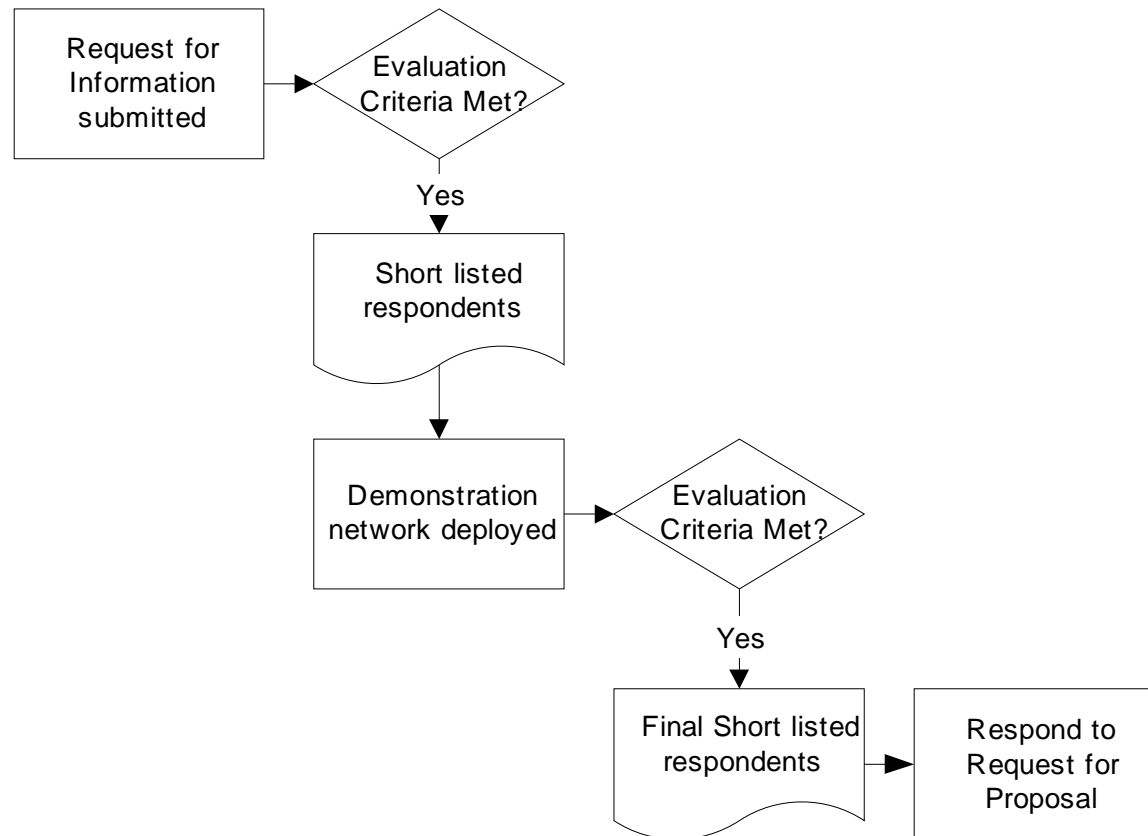
*Supply Chain Management
Office of the CIO
Department of Economic Development : ICT Sector Support Programme
City Power
Corporate GIS*

- Welcome [10h00]
- Corrections to RFI
- “Partnership” Clarification
- Procurement Process Overview
- Summary of RFI
- Demonstration Networks
- Aggregation of City Assets
- Q&A
- Close [11h30]

- The closing time will be 12h00 [not 10h30]
 - The box will close at 12:30
- Page 47, section 4.5(b) - Indicate how the proposed network would be rolled out to the entire City.
- Page 44 - “Company Profile and Background” section refers to Appendix B – Appendix B was removed as it is incorporated in the standard procurement documents.
 - Please provide the required documents and respond to the questions as in other sections.

- Partnerships
 - Project: The City is seeking to work together with the private sector to achieve the objectives of this project [a “win-win” partnership]
 - Commercial: “If the response to the RFI is made jointly, the City requires details on commercial relationships between the parties making up the consortium/joint venture/partnership.”

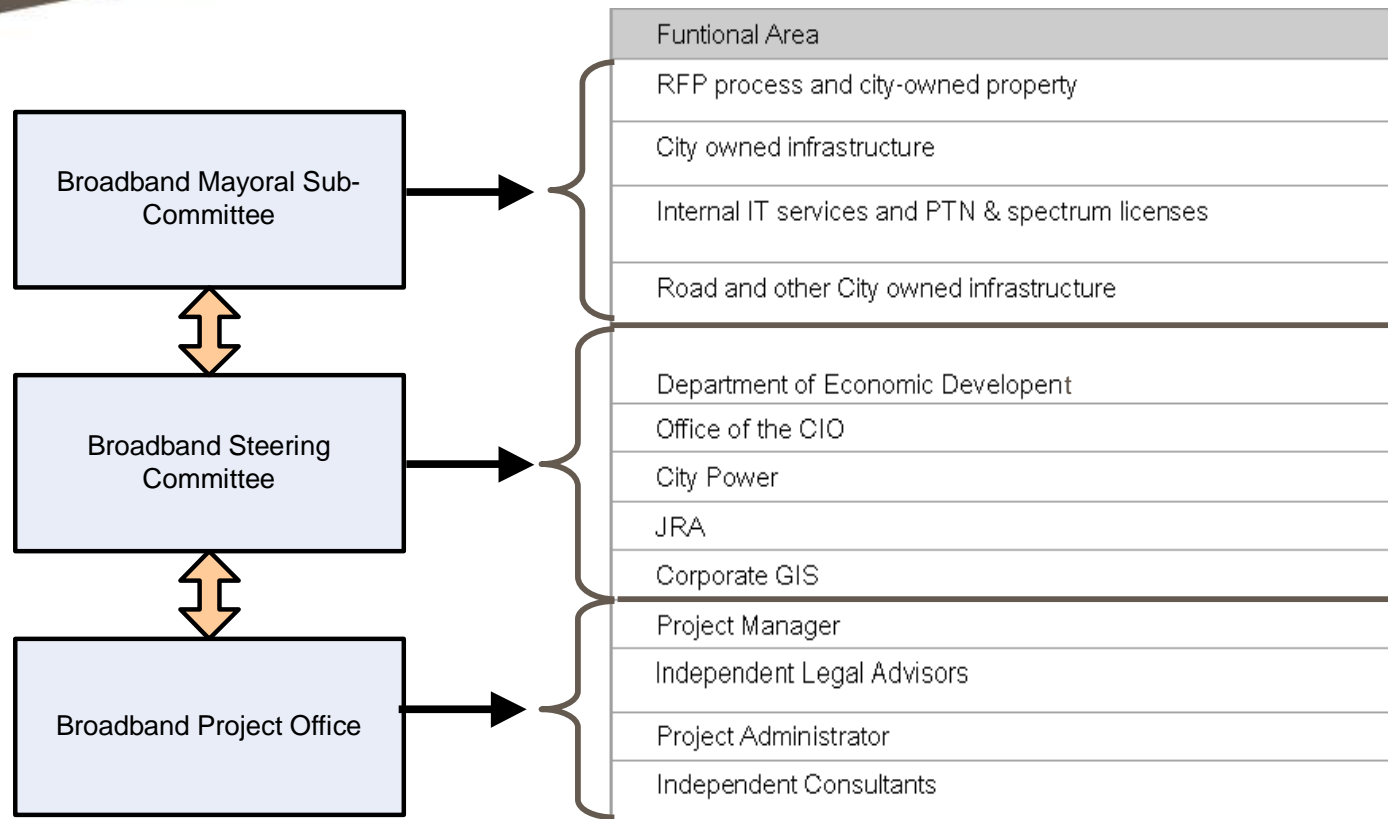
Procurement Process Overview [1]



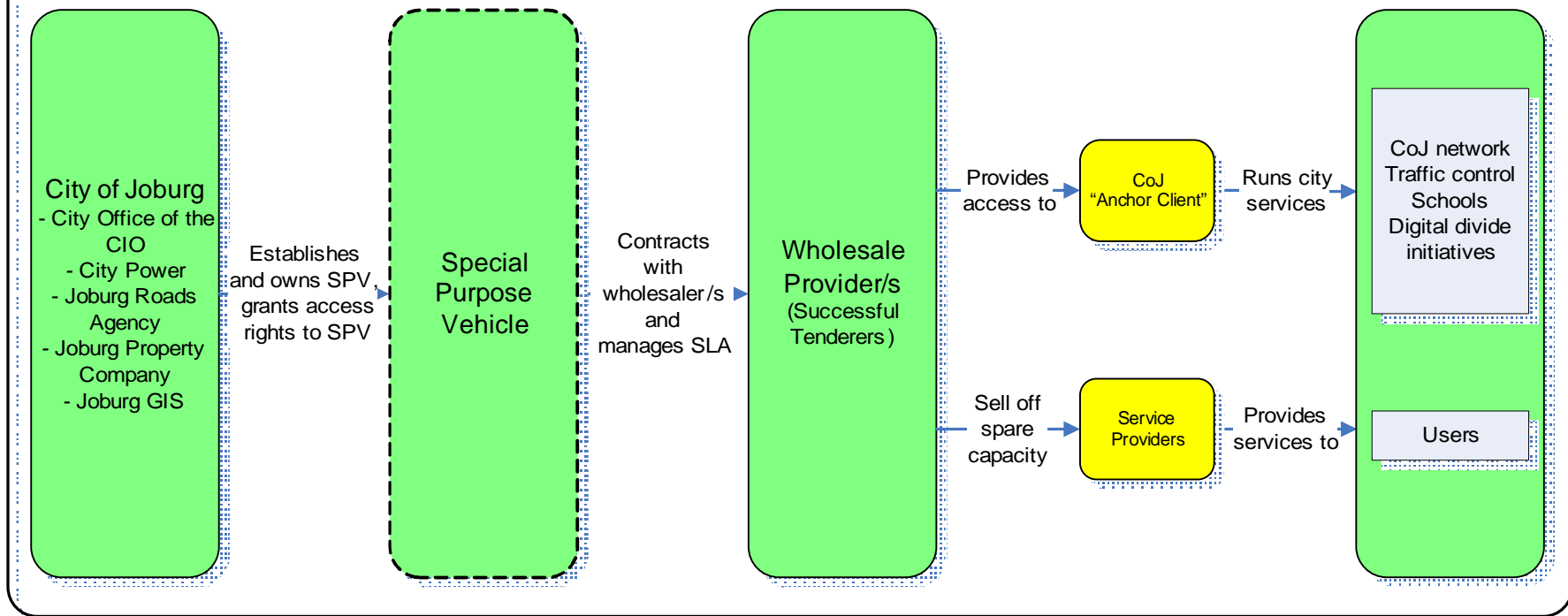
- Purpose:
 - To identify a suitable partner(s) to build and operate a Johannesburg city-wide broadband network
- Summary:
 - COJ SCM Policy allows for responses through a two stage competitive bidding process in respect to:
 - Complex projects*
 - Projects requiring multiple stages before award*
 - Projects where market engagement is required*

- Project Objective:
 - To build a "Digital" or "Smart City", where citywide networks (through a combination of technologies) ensure digital age appropriateness as well as stimulate socio-economic growth within a sustainable business model

- CoJ stakeholders:
 - City Power Johannesburg (Pty) Limited
 - City Office of the CIO
 - Johannesburg Property Company (Pty) Limited
 - Johannesburg Roads Agency (Pty) Limited
 - Corporate GIS
 - Joburg Water (Pty) Limited
 - Department of Economic Development



City of Joburg Broadband Project – Relationship Model



Project Schedule

Activity	Timeframe
Public RFI briefing session	8 th March 2007
Deadline for RFI responses	30 th March 2007
Evaluation of submissions	April 2007
Issue Terms of Reference for demonstration networks to qualified RFI respondents	To be finalised
Qualified RFI respondents build demonstration network	To be finalised
Demonstration networks evaluated	To be finalised
Short-listed respondents for RFP identified	To be finalised
RFP issued	To be finalised

- Expectations:
 - Submit a proposal in line with the requirements outlined
 - Upon being identified as a qualified respondent in the RFI stage, build a demonstration network at own cost
 - Adhere to all procurement requirements of the City and the National Treasury
- Guidelines:
 - Proposals and recommendations are to be drawn from relevant international and South African leading practice, where available
 - All recommendations are to be well motivated

Section	Title	Weighting
1	Executive summary	0
2	Business model	30
3	Technical solution	20
4	Coverage and implementation plan	10
5	Proof of technology and demonstration network	10
6	Company profile and background	15
7	Any other supporting information	5
8	BEE	10

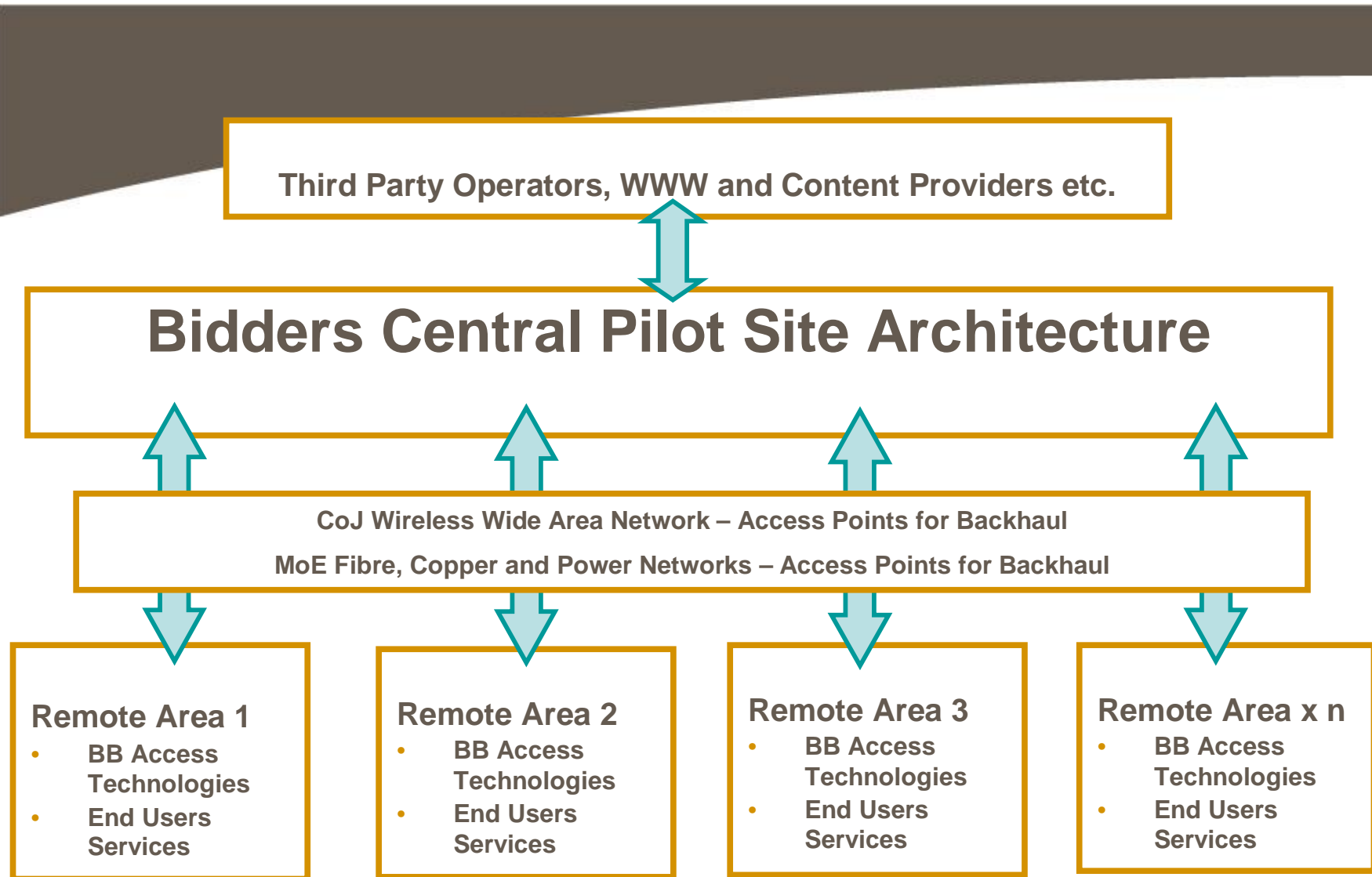
- Reducing costs of telecommunications
- Increasing access
- Financing
- Partnerships
- Cost of Services
- Social Responsibility

- Open Access (non-proprietary and IP based)
- Multiple Technologies (Broadband)
- Range of applications and services
- Future proof technology
- Maintenance and Operations

- CoJ 7 Regions (Anywhere)
- Balanced & phased roll-out
- Stakeholder engagement
- Seamless coverage
- Use and access to City assets

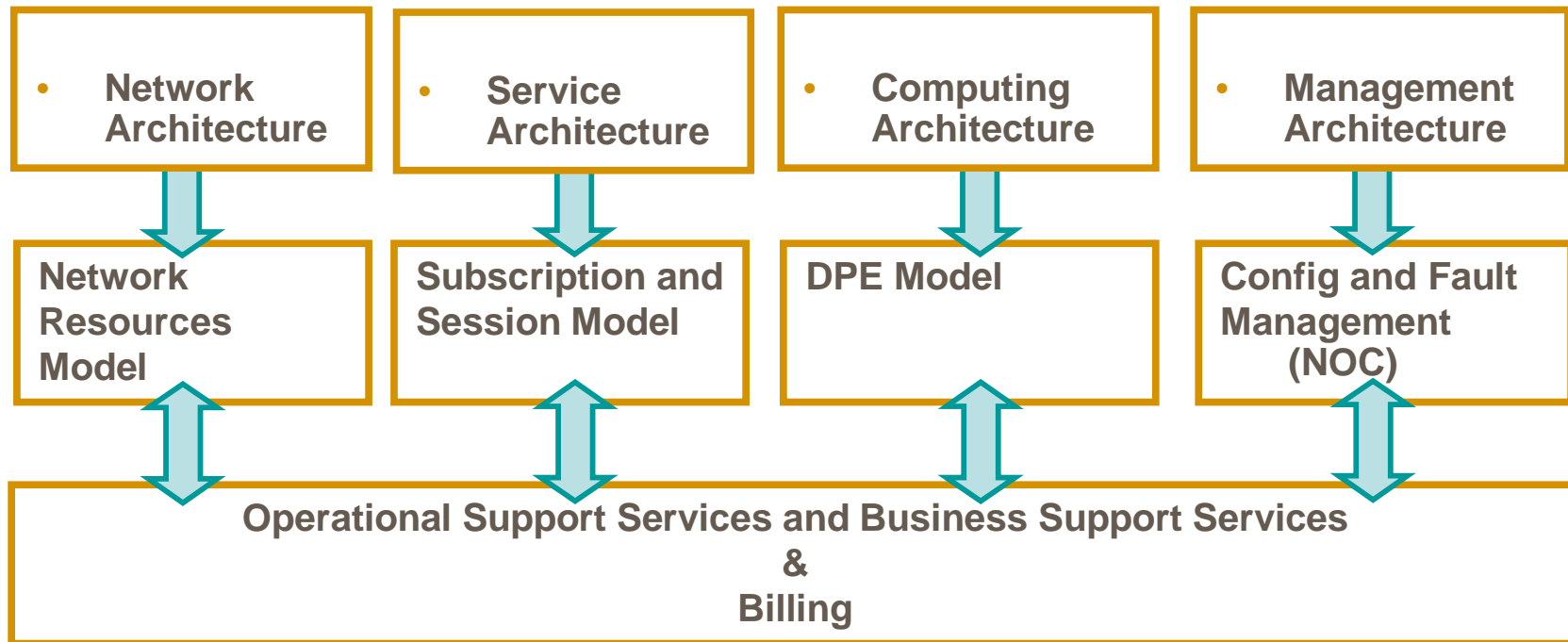
- Objective:
 - To review the technologies and the technical reference architecture as well as the potential business model of this initiative

- Considerations:
 - The City seeks to build a broadband network that is available for public use. A proprietary solution will not achieve this objective
 - The network must be accessible to the public using commercially available fixed and wireless devices based on Institute of Electrical and Electronics Engineers (IEEE) or similar open standards
 - Further criteria will be made available in the Demonstration Network



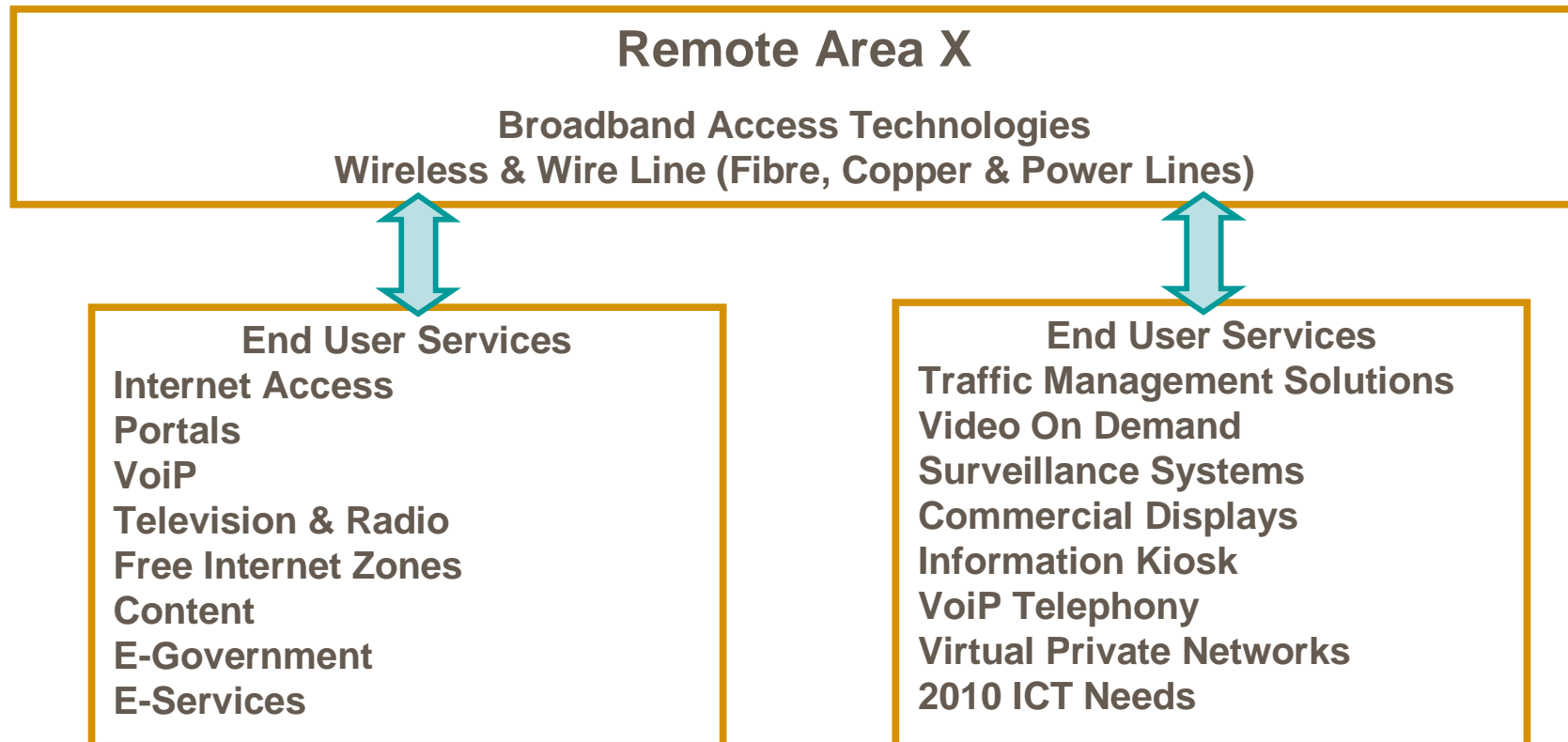
Demonstration Networks [4]

Bidders Central Pilot Site Architecture



Demonstration Networks [5]

Access Technologies and End User Services



- Expectations:
 - Minimum coverage of 1 square km
 - Operate for up to 12 weeks
 - The City will be held harmless as all costs will be borne by respondents
 - Respondents to provide network management software and cursory training

- CoJ will provide :
 - Terms of reference to provide guidance in building the network
 - GIS maps of the assigned demonstration network areas
 - Demographic information for the assigned demonstration network areas
 - Access to City-owned buildings and telecommunication assets where necessary (more information regarding these assets will be provided)
- Demonstration network locations will be determined and assigned by the City to participating vendors

Aggregation of City Assets

- The City is in the process of gathering and aggregating the telecommunication assets owned across the CoJ and MOE's into a single GIS.
 - Dark Fibre, Copper Networks, Radio High Sites, CoJ WWAN, Power Lines, Stormwater drains, Water Tower
 - CoJ Properties & Land
- The key output of this process is to have a single dataset of the CoJ telecommunication assets.
- This information will be only made available to the bidders who are requested to build a demonstration network

- Guidelines
 - Until / 11:30am or 20 Minutes [Maximum]
 - Questions will be noted and provisional responses will be given [where possible]
 - Formal written responses will be provided on the Web site
 - http://www.joburg.org.za/help/broadband_tenders.stm
 - All enquiries for this RFI should be addressed in writing to:
 - Douglas Cohen on Email: douglasc@joburg.org.za
 - Written responses will be published on the website.

- Please sign the register
 - Represent Company
- Copies of the this RFI are available from the contracts section on the 15th floor, Metropolitan Centre.
- Regarding the 3D Model [see eg on next slide] of Joburg, contact:
- **Chris Wray: Deputy Director - System Admin and Development Corporate Geoinformatics (GIS) Tel (011) 407-6120**
chrisw@joburg.org.za





Chris Wray: Tel (011) 407-6120 chrisw@joburg.org.za

Thank You

